



EURADIN
European Address
Infrastructure

Euradin – Addressing the future

The EURADIN project is a Best Practice Network. Results in a European address infrastructure with a implemented, tested and validated pilot solution.

- Service architecture and functionality for the European gazetteer services
- Technical specification of the Gazetteer Service based on open standards.
- Practical implementation of the services by several partners
- Testing and validation of the services



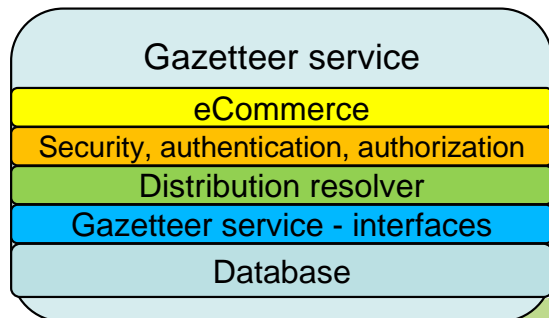
co-funded by the
Community programme
eContentplus



Who will do what?

Centralised node

NorMCA



Local nodes

DECA Intelligent addressing UK

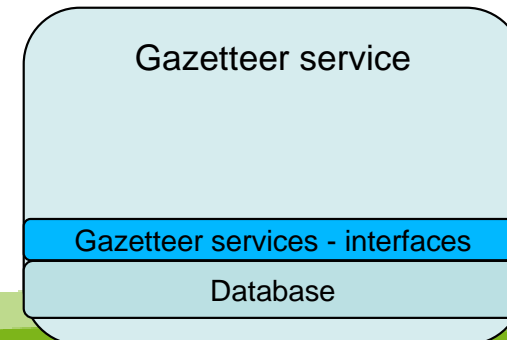
NRW Navarra

Lombardia Intergraph – Espania

BEV IGN – Espania

IGN-F Kadaster

NLS-S



Euradin adres WFS Service Implementation at NLS

The goal was to run the Euradin services without preparing specific datasets for the Euradin project.

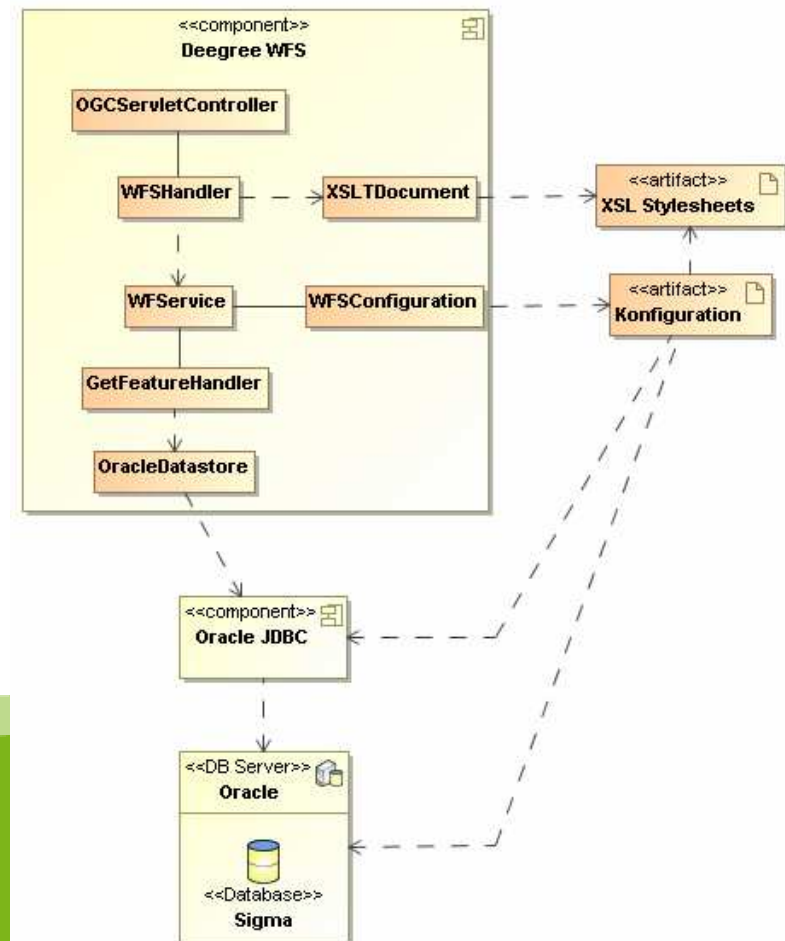
The Euradin Address WFS is implemented as a Basic WFS, which means that it implements the *GetCapabilities*, *DescribeFeatureType* and *GetFeature* operations. The Euradin Address WFS includes the Inspire address schema v.3 and the operations based on the agreed specification.

The solution:

- We used the WFS guidelines and pilot descriptions from Norway
- The solution is based upon the following components:
 - Oracle spatial, (contains the national address register)
 - Degree WFS 2.3 server

Problem to solve:

- To deliver GML 3.2.1 from WFS 1.1.0, we have modified the schema to support GML 3.2.1.
- Practically we have used XSL stylesheets to transform the request and response between external GML 3.2.1 schema and internal GML 3.1.1 schema



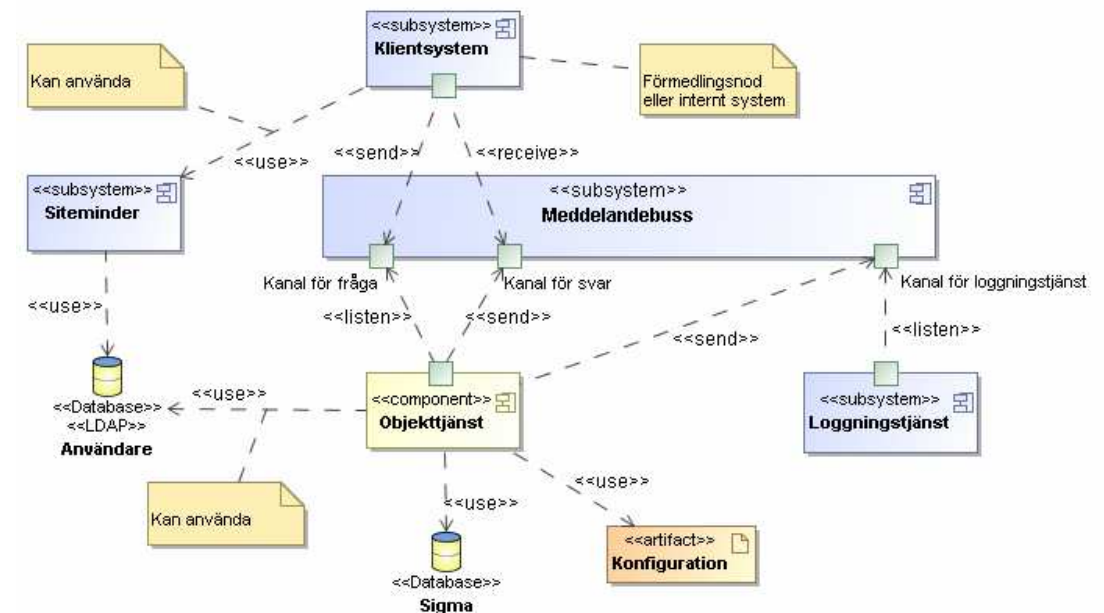
Euradin adress WS Service Implementation at NLS

The goal was to run the Euradin services without preparing specific datasets for the Euradin project.

The Euradin Address WS includes the Inspire address schema v.3 and the mandatory operations in the WSDL based on the agreed service specification.

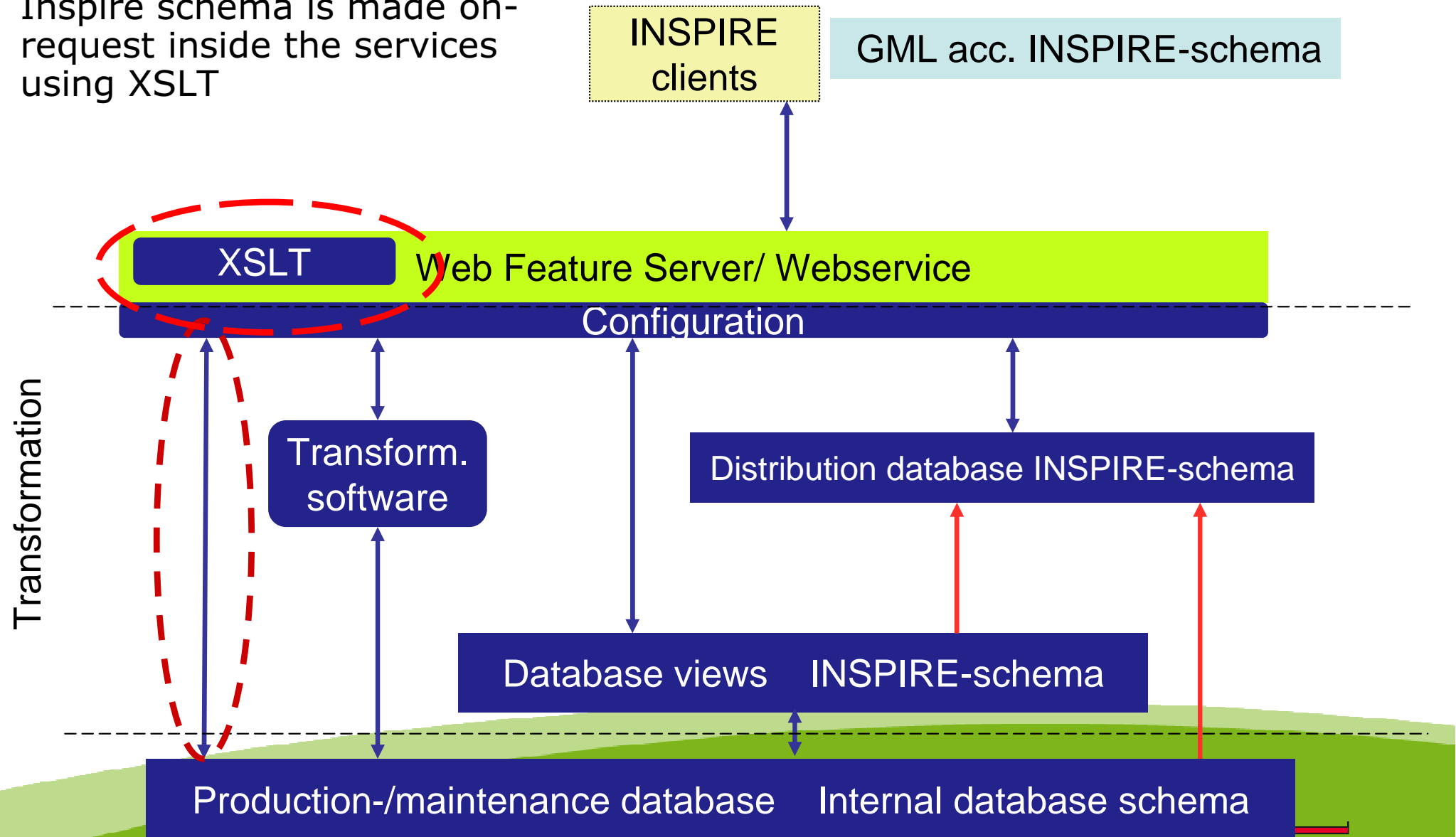
The solution:

- Is based upon the following components:
 - Oracle spatial, (contains the national address register)
 - Service component developed in Java spring. The OR-mapping was made manually with Eclipselink and OX-mapping with Moxy. We created the schemas from the wsdl-file.



The transformation solution at NLS

The transformation to Inspire schema is made on-request inside the services using XSLT



Adress WS Service

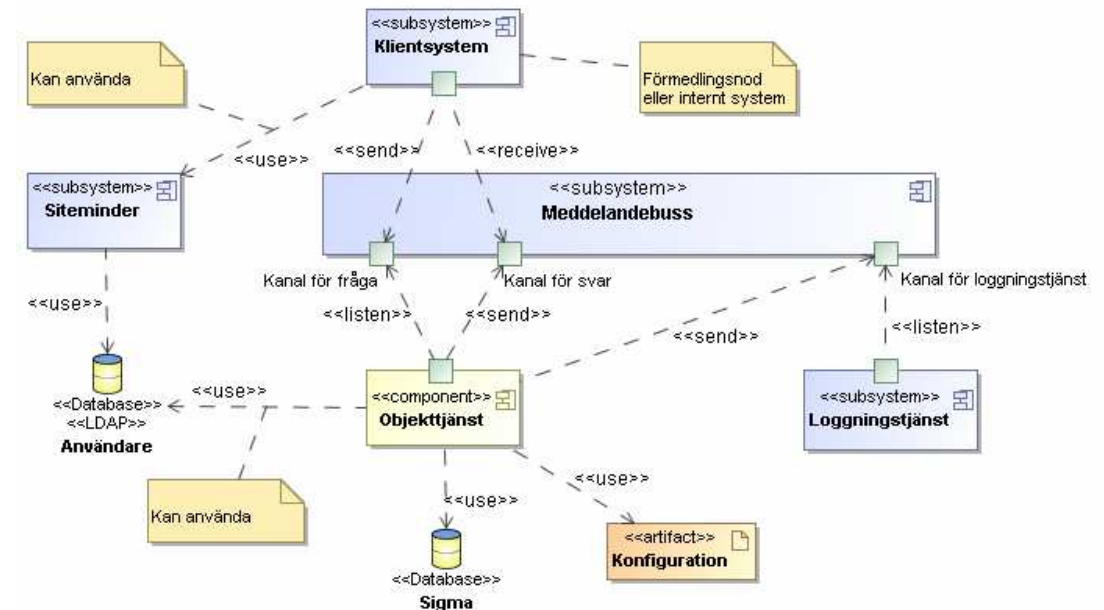
The third address service...at NLS

The Address WS use a application schema based on the Swedish language

- Functionality for
 - Geocoding; criteria searching on address attributes, free text index searching
 - Reverse geocoding; nearest address to a position

The solution:

- Is based upon the following components:
 - Oracle spatial, (contains the national address register)
 - Service component developed in Java spring. The OR-mapping was made manually with Eclipselink and OX-mapping with Moxy.



Experiences NLS-S

- Pilot ready 15 Feb 2010 från NLS-S
- Tests made in Norway
- Useful experience mapping to Inspire model.
- Useful experience to publish WFS och Web Service with many options.
- A WFS-server can seldom be used without modification (on complex models). Positive with WFS in open source code!
- Inspire-models are complex= complex transformations
- Web services are needed as complement to WFS.